

**SOLT**

**Wireless Calling System**

High Performance! Inimitable Designs!



## High Quality and Reliability!



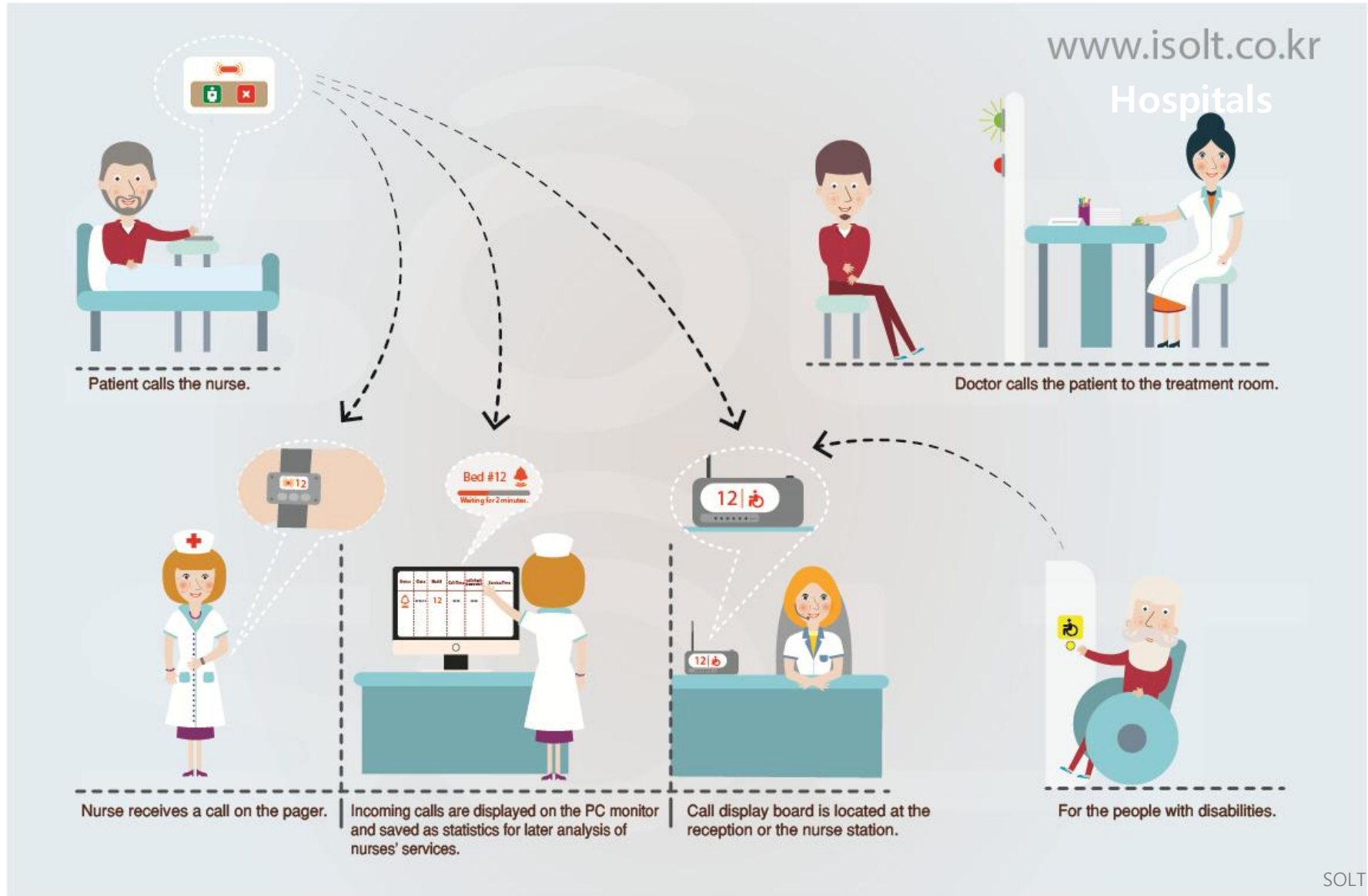
## Restaurants





## Product Application Fields

### Hospitals



## Outstanding Features of Solt system

### Transmitters



**Frequency Type : FSK**



Accuracy and Stability of call...AM type not comparable

**CPU Embedded(TI solution)**



No duplication of bell ID...Remote IC not comparable

**Transmission Controllable**



Battery saving, No interference to other bells

**Others**



Longer call distance, Battery saving algorithm

## Outstanding Features of Solt system

Receivers



Transmitter



Wall-mount Receiver



Mobile Receiver

Frequency Type : FSK



Accuracy and Stability of call receiving... AM not comparable

TCXO-based RF



Low RF variation, No clock defect, RF changeable...not X-tal

Variety of Function



Sound selectable(22), Volume controllable(9 steps) etc.

System Configuration



N(multiple) to N transmitter and receiver configuration

## Outstanding Features of Solt system

### Receivers



**Transmitter**



**Wall-mount Receiver**



**Mobile Receiver**

**Frequency Type : FSK**



Accuracy and Stability of call receiving...AM not comparable

**TCXO-based RF**



Low RF variation, No clock defect, RF changeable...not X-tal

**Direct Call Receiving**



Direct call receiving from bells(no need transceiver)

**Others**



Rechargeable Lithium battery, Robustness etc.



## Extension of call reach range

Call reach distance is about **100m** ( based on Open Field )



For extending signal reach distance and covering shaded area, use repeaters.

The image displays a wide variety of SÖLT smart lock models. On the left, there are three rectangular locks in black, brown, and white. In the center-left, there are three circular locks in black, red, and white. To the right of these are three rectangular locks: a light grey one with 'CALL' and 'CANCEL' buttons, a black one with six touch-sensitive icons, and a white one with a numeric keypad. Further right are three more rectangular locks in white, each with different button layouts. On the far right, there are four oval-shaped locks in brown, dark brown, black, and dark grey, each featuring a small screen and touch-sensitive controls.

[illegible]

# TRANSMITTER

## [SINGLE-BUTTON BELLS]

MODEL	IMAGE	BUTTON	DESIGN	SIZE	WEIGHT	BATTERY			LED	COMMON SPECIFICATION
				(WxLxH)mm	(g)	TYPE	Q'TY	L/T		
SB3-1PBK(black) SB3-1PBR(brown) SB3-1PWH(white)		1 call	<b>Slim &amp; Echo-friendly</b>  • No coating / printing • Waterproof(IP-3)	67×42×11	20	coin cell CR2032	1	1 year	Top	<ul style="list-style-type: none"> <li>• Transmission way : FSK</li> <li>• Transmission type : 360° omnidirectional</li> <li>• Bell ID : 1/16 million (duplicate ID almost not possible)</li> <li>• Antenna type : PCB</li> </ul> <p>*** Battery lifetime : calculated based on 15 calls per day</p>
SB5-1PBK(black) SB5-1PBR(brown) SB5-1PWH(white)		1 call	<b>Familiar &amp; accustomed</b>	58Ø×12.6	20	coin cell CR2032	1	1 year	Top	
SB7-1PBK(black) SB7-1PWH(white)		1 call	<b>Advanced &amp; Luxurious</b>  • Dual-indicators (Top & bottom round) • Double-molded case • No scratch on top (Urethane material) • Waterproof(IP-7)	60Ø×16	29	coin cell CR2032	2	2 year	Top & bottom	
SB9-1PBK(black) SB9-1PBR(brown) SB9-1PWH(white)		1 call	<b>Slim &amp; Elegant</b>  • Dual-indicators (Top & bottom round)	74×46×11	28	coin cell CR2032	2	2 year	Top & bottom	






# TRANSMITTER

## [MULTI-BUTTON BELLS]

MODEL		BUTTON	DESIGN	SIZE (W x L x H mm)	WEIGHT (g)	BATTERY TYPE / Q'TY	LED	COMMON SPECIFICATION
SB6-2XBK(black) SB6-2XWH(white)		1 call + 1 cancel	<b>Practical and multi-functional</b> • Signal efficiency maximized	100×60×6.5	50	coin cell CR2450 x 2	top	<ul style="list-style-type: none"> <li>• Transmission way : FSK</li> <li>• Transmission type : 360° omnidirectional</li> <li>• Bell ID : 1/16 million (duplicate ID almost not possible)</li> <li>• Antenna type : PCB</li> <li>• Waterproof : life waterproof</li> <li>• 2 year battery lifetime (based on 15 call a day)</li> </ul>
SB6-6PBK(black) SB6-6PWH(white)		1 call + 1 cancel	<b>Practical and multi-functional</b> • Signal efficiency maximized	100×60×6.5	50	coin cell CR2450 x 2	top	
SB6-6XBK(black) SB6-6XWH(white)		5 call + 1 cancel (or) 3 call + 3 cancel	<b>Practical and multi-functional</b> • Signal efficiency maximized	100×60×6.5	50	coin cell CR2450 x 2	top	
SB9-2XBK(black) SB9-2XBR(brown) SB9-2XWH(white)		1 call + 1 cancel	<b>Slim &amp; Elegant Multi-functional</b> • Dual-indicators (Top & bottom round)	74 x 46 x 11	28	coin cell CR2032 x 2	Top & bottom	
SB9-3PBK(black) SB9-3PBR(brown) SB9-3PWH(white)		3 call	<b>Practical and multi-functional</b> • Dual-indicators (Top & bottom round)	74 x 46 x 11	28	coin cell CR2032 x 2	Top & bottom	
SB9-3XBK(black) SB9-3XBR(brown) SB9-3XWH(white)		2call + 1cancel	<b>Practical and multi-functional</b> • Dual-indicators (Top & bottom round)	74 x 46 x 11	28	coin cell CR2032 x 2	Top & bottom	

# RECEIVER





## [MAIN DISPLAY UNITS] - Wall-mount type Receivers

MODEL	IMAGE	FND	BASIC FUNCTION	SIZE	WEIGHT (g)	COMMON SPEC.	USER SET ITEMS
SM3-22PN		2X2	Call ID display Call only No memory	288(W) 133(H) 40(T)	535	<ul style="list-style-type: none"> <li>• Antenna : external dipole antenna</li> <li>• Signal receiving : FSK 360° omnidirectional</li> <li>• Power Supply : AC/DC12V external adaptor</li> <li>• Available bell ID registration : max. 1,000 bells</li> <li>• Bell ID form : numeric + English alphabetic + 2 dash("_", "-") and blank</li> <li>• Bell ID registration method : by air</li> <li>• Speaker : High quality and various bass</li> </ul>	<ul style="list-style-type: none"> <li>• Sound type : 22 sounds</li> <li>• Sound level : 9 steps</li> </ul>
SM3-23PN		2X3	Call ID display Call only No memory	288(W) 133(H) 40(T)	573		<ul style="list-style-type: none"> <li>• Sound repeat time</li> </ul>
SM3-33PN		3X3	Call ID display Call only No memory	288(W) 133(H) 40(T)	650		<ul style="list-style-type: none"> <li>• Sound type for each bell</li> <li>• Call ID display time (PN model only)</li> <li>• Call overlapping time</li> </ul>
SM3-33PC		3X3	Call ID display Call & <b>cancel</b> 20 call memory	288(W) 133(H) 40(T)	650		<ul style="list-style-type: none"> <li>• Easy all bell ID deletion</li> </ul>
SM3-61PC		6X1	Call ID display Call & <b>cancel</b> 20 call memory Call IDs rolling	288(W) 133(H) 40(T)	650		<ul style="list-style-type: none"> <li>• Easy consecutive bell ID Register</li> </ul>





# RECEIVER

## [PAGERS] -Portable Receivers


MODEL	IMAGE	TYPE	Display	SIZE (WxLxH mm)	WEIGHT (g)	POWER SUPPLY	FEATURES AND SPECIFICATION	USER SETTING ITEMS
SP5-100		Wrist-watch	Mono LCD 2 lines X 6 digits 	56×42×16	54	<ul style="list-style-type: none"> <li>Rechargeable lithium-polymer Battery(600 mAh, DC 3.7V)</li> <li>Battery stand-by time : max. 30 hours</li> </ul>	<ul style="list-style-type: none"> <li>Antenna : built-in helical antenna</li> <li>Signal receiving : FSK 360° omnidirectional</li> <li>Available bell ID registration : max. 1,000 bells</li> <li>Bell ID form : numeric + English alphabetic + two dashes("-","-") and bank</li> <li>10 call memory</li> </ul>	<ul style="list-style-type: none"> <li>Call alarm method : sound(beep/chirp) or vibration(low – high) or beep sound + vibration</li> <li>Time display on / off</li> <li>Receiving limit bell ID</li> <li>Call overlapping time</li> <li>Reminder alert</li> <li>Easy all bell ID deletion</li> <li>Easy consecutive bell ID Registration</li> </ul>
SP5-200		Belt-clip			50			
SP7-100		Wristwatch	FSTN LCE with white backlight (re :96X64)	37x49x13.5	38	<ul style="list-style-type: none"> <li>Rechargeable lithium-polymer Battery(250 mAh, DC 3.7V)</li> <li>Battery stand-by time : more or less 40 hours</li> </ul>	<ul style="list-style-type: none"> <li>Display : 0.9" LCD</li> <li>Available bell ID : 900 pcs</li> <li>50 Call number memory</li> <li>Call order check function</li> <li>Easy setting with icons</li> </ul>	<ul style="list-style-type: none"> <li>Time</li> <li>Alarm method</li> <li>Bell ID</li> <li>Others (DUPT, alarm repeat. Reminder alarm etc.)</li> <li>Data copy(device to device –cable option)</li> </ul>

## [PC MONITORING RECEIVER]

MODEL	IMAGE	SIZE (WxLxH mm)	WEIGHT (g)	POWER	FEATURES	SPECIFICATION
SR5-MPR and		146 X 90 X 32	116	AC/DC12V Adapter	<ul style="list-style-type: none"> <li>Display : 1.3"LCD(back side)</li> <li>Available bell ID : 500 pcs</li> <li>Bell ID registration method : by air</li> </ul>	<ul style="list-style-type: none"> <li>Antenna : external dipole antenna</li> <li>Signal receiving : FSK 360° omnidirectional</li> <li>PC Interface : via RS-232 Converter</li> </ul>
PC MONITORING PROGRAM					<ul style="list-style-type: none"> <li>Call Display</li> <li>Call Data management</li> </ul>	<ul style="list-style-type: none"> <li>4 programs included : <ul style="list-style-type: none"> <li>Map Type call only</li> <li>Map Type call-cancel</li> <li>Stack Type call only</li> <li>Stack Type call-cancel</li> </ul> </li> </ul>

# TRANSCEIVER

## [REPEATER]

MODEL	IMAGE	Display	BASIC FUNCTION	SIZE	WEIGHT (g)	POWER	FEATURES	USER SET ITEMS
SR5-BPR		1.3"LCD on back side	Extension of signal reach distance between bell and receiver	146(W) 90(H) 32(T)	116	AC/DC12V external adaptor Adapter	<ul style="list-style-type: none"> <li>• Available bell ID : 500 pcs</li> <li>• Bell ID registration method : by air or by SPM(Solt PC Manager)</li> </ul>	<ul style="list-style-type: none"> <li>• Transmission delay time</li> <li>• Mount point : Wall or ceiling</li> <li>• Easy all bell ID deletion</li> <li>• Easy consecutive bell ID register</li> </ul>

# APPLICATION ITEMS

## [TRANSMITTERS]

MODEL	IMAGE	CATEGORY	ORIGIN MODEL	APPLICATION FIELDS	FUNCTIONALITY	SPECIFICATION
SB5-1PWH-P		Transmitter (call only)	SB5-1PWH	Hospitals	Wired Push-button	Push-button cable : 1.5 m
SB6-2XWH-P		Transmitter (call-cancel)	SB6-2XWH	Hospitals	Curl-wired Push-button (Fixed)	Push-button cable : 1.5 m
SB6-2XWH-PD		Transmitter (call-cancel)	SB6-2XWH	Hospitals	Straight-wired Push-button (Detachable)	Push-button cable : 1.5 m
SB6-2XWH-F		Transmitter (call-cancel)	SB6-2XWH	Hospitals	Wired Stepping button	Step-button cable : 1.5 m
SB6-2XWH-S		Transmitter (call-cancel)	SP5-1PWH	Hospitals	Pull-String button	Pull -String cable : 1.0 m
SB6-DOP		Transmitter (call only)	SB6	Hospitals Offices	Magnet Sensing of door opening	Bell part and Magnet part
SB6-PMP		Transmitter (call-cancel)	SB6	Hospitals	Magnet Sensing of Patient's movement	Bell part and Magnet part
STS-100FM		Transmitter (call-cancel)	SB6	Hospitals	Stepping Sensing	Mat(sensing part) and Bell Part
SB9-1P**-M		Transmitter (call-cancel)	SB9-2X	Hospitals Shopping malls Super markets etc.	Magnet Sensing Cancel Button	Bell part and Magnet part

- 1 Connect the SR5-MPR & Serial to the PC, and run Hyper-terminal program.
- 2 Push the transmitter (ex, SB5-1P). → Output 19-digit code on the Hyper-terminal program.  
(Communication settings : 9600, 8, N, 1(STOP BIT))

## UART Transmit Format

stx	KeyCode [hex]		Blank	Bell Chip ID [hex]						Blank	Display ID [Number/Character]							etx
	2nd	1st		6th	5th	4th	3rd	2nd	1st		6th	5th	4th	Blank	3rd	2nd	1st	

\*\*Key Code : Unique value of transmitter button numbers (2 byte) → Fixed value

\*\*Bell Chip ID : Transmitter Unique ID value (6 byte) → Production random generated ID

\*\*Display ID : User display ID (7 byte) → User setting ID

## Key Code Table

Key Code	Hyper terminal	Key Code	Hyper terminal
1	14	2	24
3	28	4	34
5	38	6	44
7	48	8	54
9	58	10	64
11	68	12	74
13	78	14	84
15	E4	16	F4

\*\*If one button transmitter, mostly keycode is "1(14)".

Ex): Keycode: "1", Bell Chip ID: FF0001, Display: "A10",

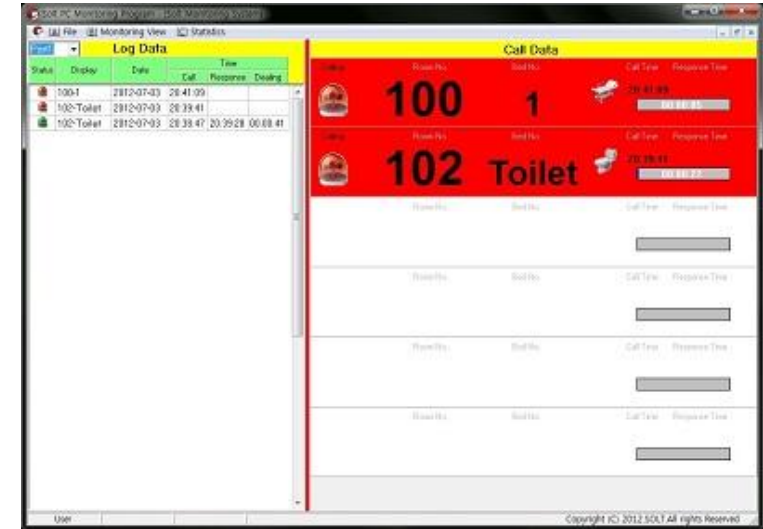
stx	KeyCode [hex]		Blank	Bell Chip ID [hex]						Blank	Display ID [Number/Character]							etx
	1	4		F	F	0	0	0	1		A	1	0	Blank	null	null	null	

\*\*If Display ID is less than 5 characters, the remaining digits are treated with "null data".

## Monitoring Program

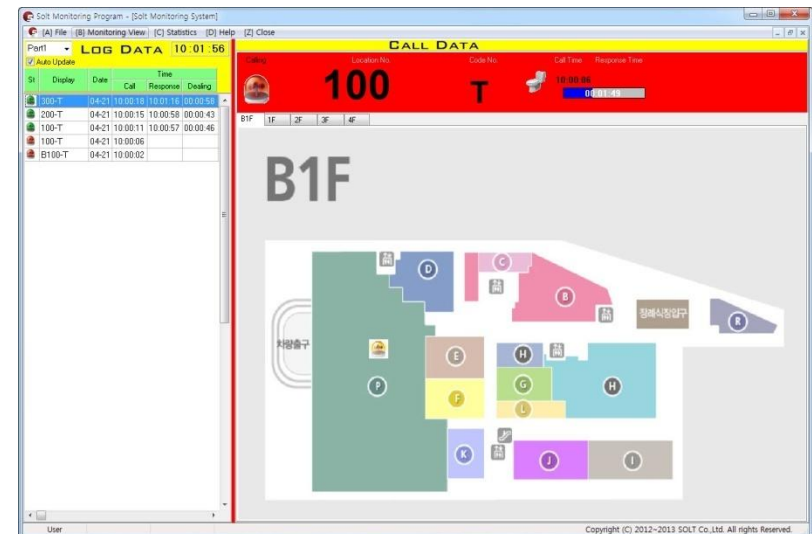
### Model : SR5-MPR Program( basic Type)

- Operational monitoring program through SR5-MPR
- Call only / call-cancel monitoring
- Statistics support
- Convertible to Excel
- Dealing time setting and Notification sound support



### Model : SR5-MPR Program(Map Type)

- Operational monitoring program through SR5-MPR
- Call only / call-cancel monitoring via map
- Statistics support
- Convertible to Excel
- Dealing time setting and Notification sound support





## ACCESSORIES



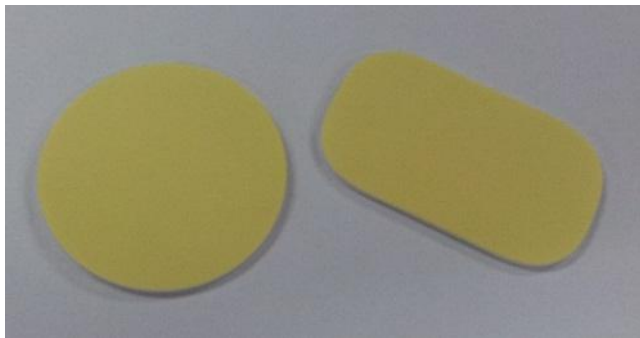
### Adapter

- 12V 1A Adapter for **Fixed Receiver/Repeater**
- Power Cable length : 5m



### Bracket & Screw

- Wall mount Bracket for **Fixed Receiver/Repeater**



### Double-sided tape

- Double-sided tape for attaching to a table



### Adapter

- 5V 1A Adapter for Mobile Receiver
- USB Type Power Cable (length 0.8m)

## PACKAGING

### Fixed Receiver

- Box Size : 375W x 185L x 77H mm
- Contents : One(1) set + One Adapter + One Bracket + Two Screw
- Weight : 1115g (based on SM3-33PN)



### 1-button Transmitter

- Box Size : 375W x 185L x 77H mm
- Contents : Thirty(30) set + Thirty of Double-sided tape
- Weight : 1030g (based on SB3)



### Repeater

- Box Size : 375W x 185L x 38H mm
- Contents : One(1) set + One Adapter + One Bracket + Two Screw
- Weight : 500g



### Mobile Receiver

- Box Size : 176W x 93L x 36H mm
- Contents : One(1) set + One Adapter + One Cable
- Weight : 140g

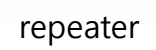


### Master carton

- Box Size : 570W x 390L x 415H mm
- Contents : in case of Fixed Receiver : 15 EA
- in case of 1-button Transmitter : 450 EA
- in case of Repeater : 30 EA
- in case of Mobile Receiver : 132 EA
- \* Out-box weight (without contents) : 1500g



**CE(EU)**



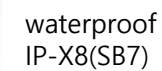
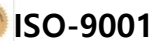
# FCC(USA)

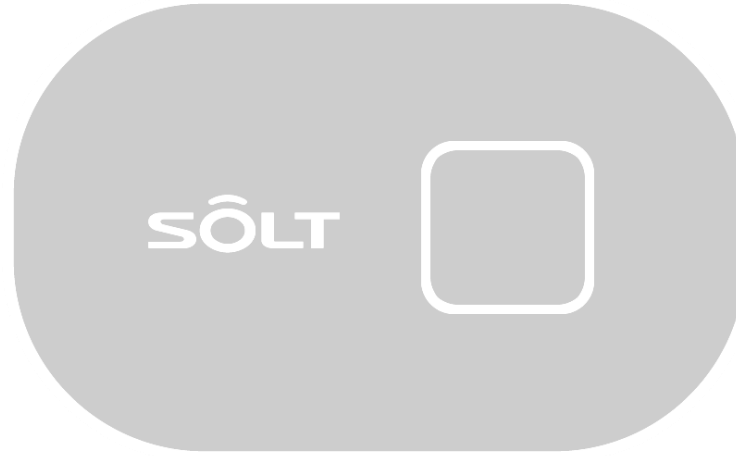


# MIC(Japan)



## Others





**THANKS!**