

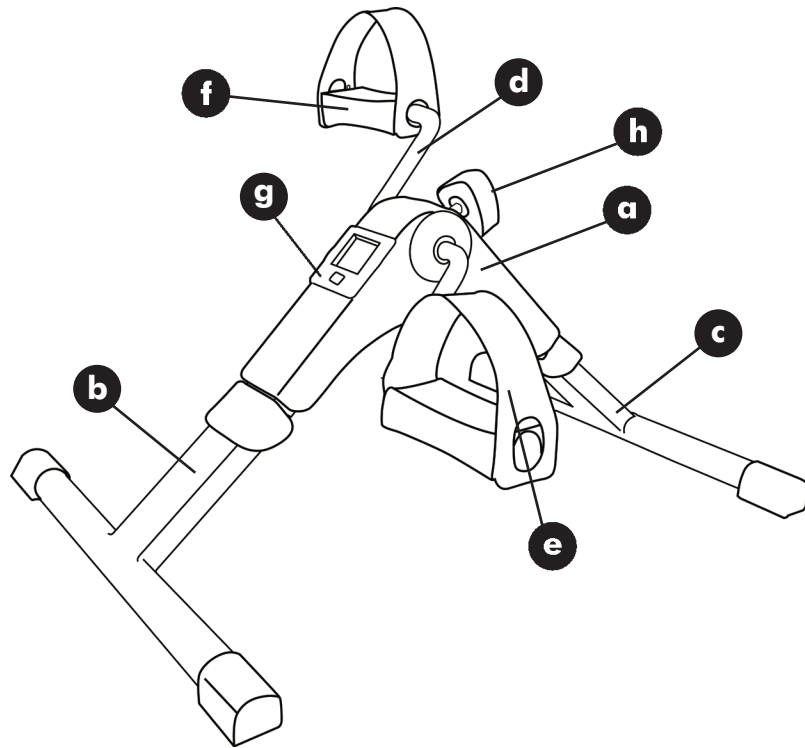


Zhejiang Todo Hardare Manufacture Co.,Ltd
Add:20th FL,Jinshan Building,CBD Centre,
Yongkang,Zhejiang,China

MODEL NO.:TD001P-3

INSTRUCTION MANUAL

DESCRIPTION



ASSEMBLY

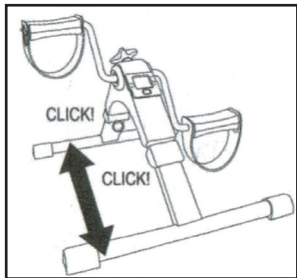


fig. 1

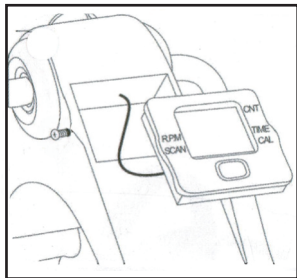


fig. 2

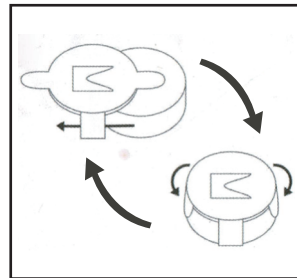


fig. 3

FOLDABLE MINI EXERCISE BIKE

PURCHASE ACKNOWLEDGEMENT

Thanks you for the trust placed in the purchase of our product and we are certain that you will always be satisfied with any of our products.

PRODUCT DESCRIPTION

- a- Main body.
- b- Front base.
- c- Rear base.
- d- Handle bars.
- e- Right pedal.
- f- Left pedal.
- g- Counter and battery compartment.
- h- Effort regulator.

SAFETY WARNINGS

- These instructions are very important. Please read this instructions manual carefully before using the appliance and keep it at hand to refer to it at any time.
- Vendor declines any responsibility for the improper use of the product, or any other use that is not described in this manual.
- Before using the product for the first time, unpack the product and check that it is in perfect conditions. If not, do not use the appliance and contact Vendor as the guarantee covers any damage from origin or manufacturing defects.
- This product is only indicated for domestic use. Do not use the appliance outdoors. Never leave the appliance exposed to climatic agents such as rain, snow, sun, etc.
- This appliance can be used by children of 8 and more years old as well as by disable people, people with reduced sensorial o mental capacities, people with lack of experience and knowledge, if the appropriate supervision and-ins truction of use was provided them in reliable way and they understand danger it entails. The cleaning and maintenance allow to be realized by the user, must no be realized by the children, only in case they are more than 8 years old and only under supervision.
- Keep the appliance out of reach of the children younger 8 years old.
- Children should be supervised to ensure they do not play with the device.
- Do not immerse the appliance in water or any other liquid.

-Do not mix new batteries or the old and worn-out.

ASSEMBLY

1. Unfold the front and the rear bases till it sounds a "click". It means that the structure is properly attached in order to practise the exercise. Before doing any exercise, please check both bases are properly fixed (as fig. 1).
2. Place the display unit into its gap. Note that the wire must be properly placed inside (as fig. 2).
- 3- Place the intensity regulator screw into its slot, placed on the top part of the mini exercise bike.

INSTRUCTIONS FOR USE

-This pedaler has 4 different functions:

-CNT – COUNTER Total of laps done with the device during this training session.

-TIME: Counts the effective exercising time during this training session.

-CAL - CALORIES: Calories burnt during the exercise.

-RPM - Revolutions per minute: It shows the average of laps per minute based on the intensity of the pedal exercise.

-Before starting the exercise, place the device on a flat surface and adjust the pedaling resistance according to the strength desired for the exercise (h). In order to obtain more resistance, turn the dial counterclockwise.

1.-Press the red button located in the counter (g) or start pedaling. In this way the counter (g) will be started.

-The word STOP will appear at the display when you stop pedaling and it will disappear when you renew the exercise.

-The display turns off in a few minutes after you stop pedaling.

2.-To check the results obtained with the exercise read carefully the following procedure:

*Automatic mode to see the results:

-Press the red button once. "SCAN" will flash. All the obtained results (TIME, RPM, CALORIES) will be displayed. They will appear for 5 seconds approximately.

*Manual mode to see the results:

-In order to set the function you want to see during the exercise, and to pass from one function to the next, press 2 times consecutively the red button to set the desired function on the screen (TIME, CAL, RPM). If you press the red button only once, it returns to automatic mode without setting any particular function.

NOTE: To set the counter to "ZERO": press the red button for some seconds. All the indicators will be set to "0".

3.-Batteries replacement: Remove the counter (g) for its original position using the notches located around the counter. You will reach the battery cabinet and

there you can replace it without using any tool (as fig. 3).

CLEANING AND STORAGE

-Clean first with a damp cloth and then a dry cloth.

-Keep the appliance in a safe place.

-In order to storage the device, pull the rings until both bases stop being fixed.

TECHNICAL DATA

1,5V = 1 x LR44 1,5V MAX LOADING:90 KGS

This device conforms to the safety requirements and provisions of directives 2014/35/EU on Low tension devices and 2014/30/EU on Electromagnetic Compatibility.

PRODUCT RECYCLING - ENVIRONMENT

Packaging



The materials used in this product's packaging are integrated in a system of waste collection, sorting and recycling. If you wish to dispose of these materials, you should use rubbish bins or other municipal means of waste collection that are appropriate for each type of material.



Electrical and Electronic Product

This symbol means that if you wish to dispose of this product at the end of its life, you must take it to a waste collection company authorized for the selective collection of Waste Electronic and Electrical Equipment (WEEE).

This product does not contain concentrations of materials considered harmful to the environment.